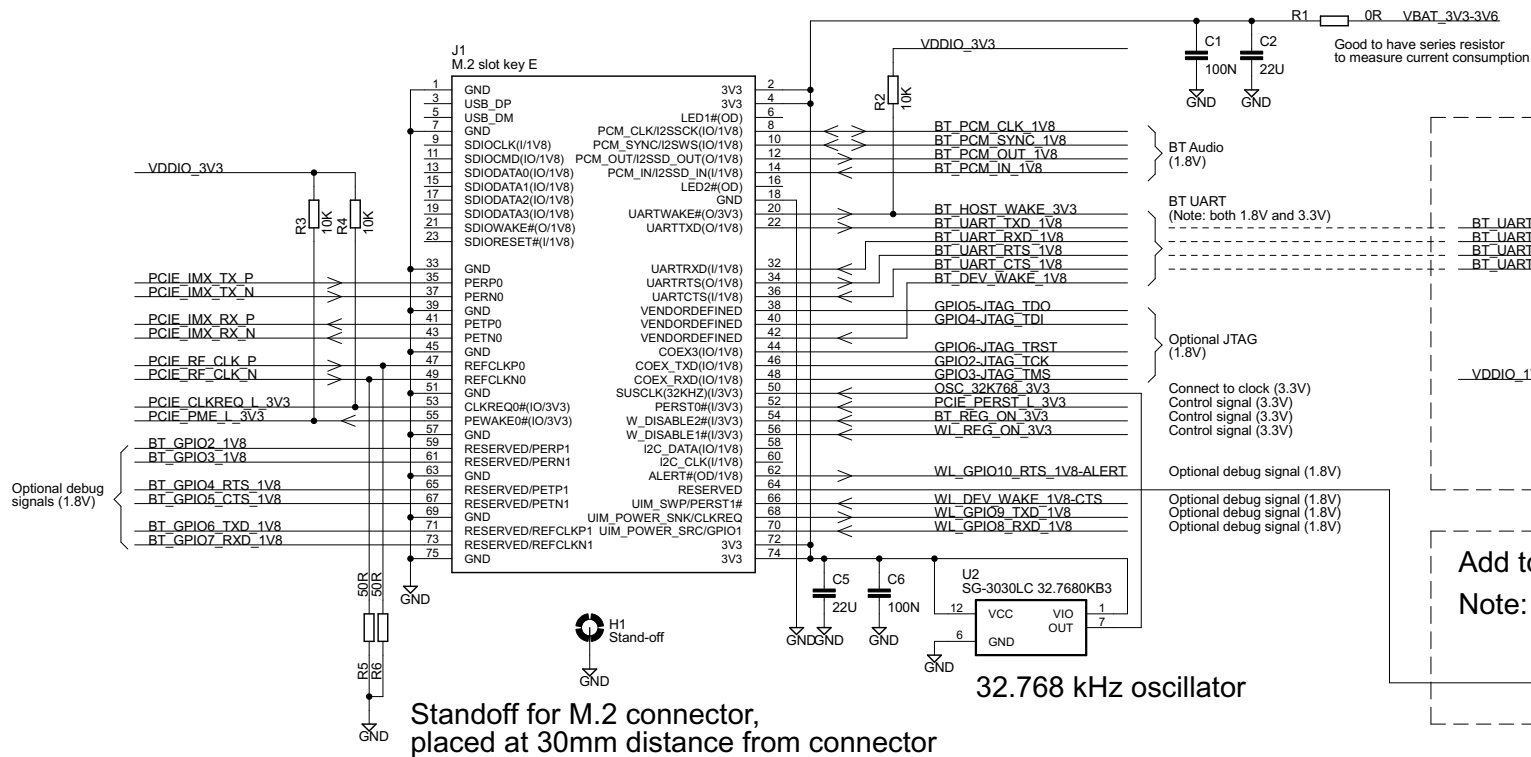
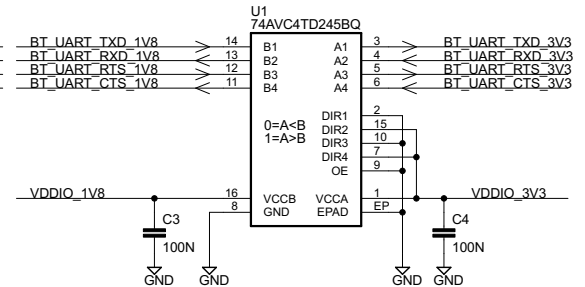


M.2 Key E Connector with PCIe Interface



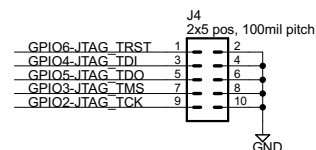
Example level shifter



Add to override 1.8V VDDIO to 3.3V
Note: not working on all M.2 modules

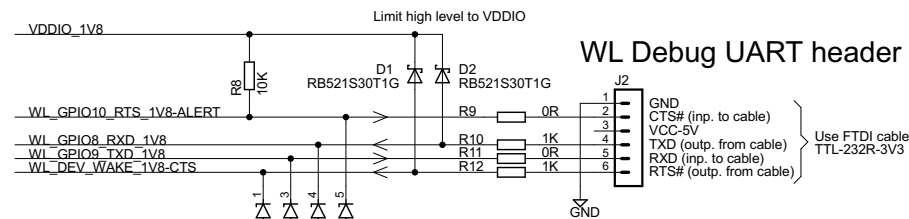
R7 0R VDDIO_3V3

WLAN JTAG

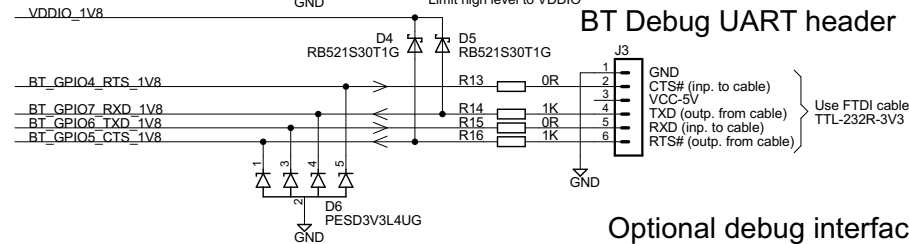


Optional debug interface

WL Debug UART header



BT Debug UART header



Optional debug interface



(C) Embedded Artists AB

TITLE: M.2 PCIe Interface rev PA1

Document Number:

Date: 2019-05-03 23:29:34

Sheet: 1/1